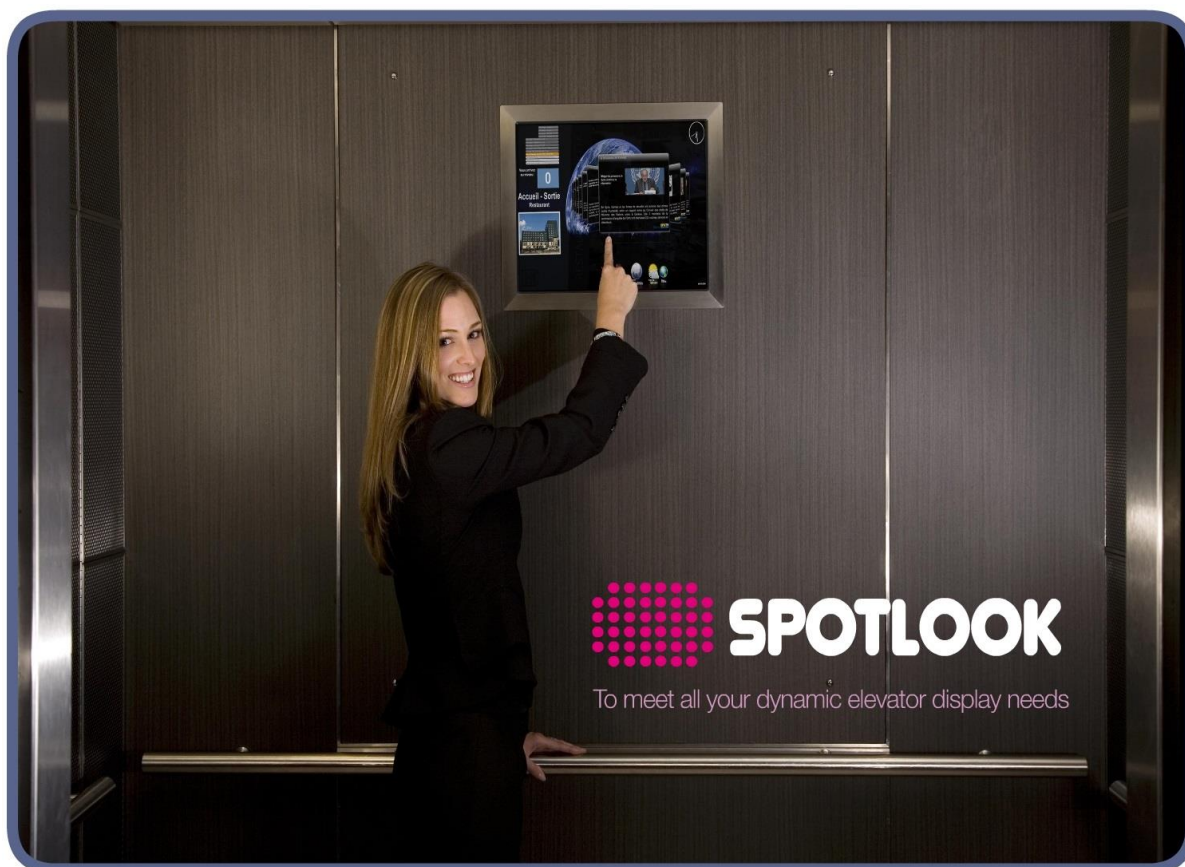


Quick reference guide
Elevator displays
Equinox



This document describes the features and the different materials available in our **SPOTLOOK Equinox** range of displays for elevators.



Need help or informations ?
contact us

contacts@spotlook.com

Phone: +33 (0)1 47 78 92 60

Fonctionnalités apportées par les écrans **SPOTLOOK Equinox**

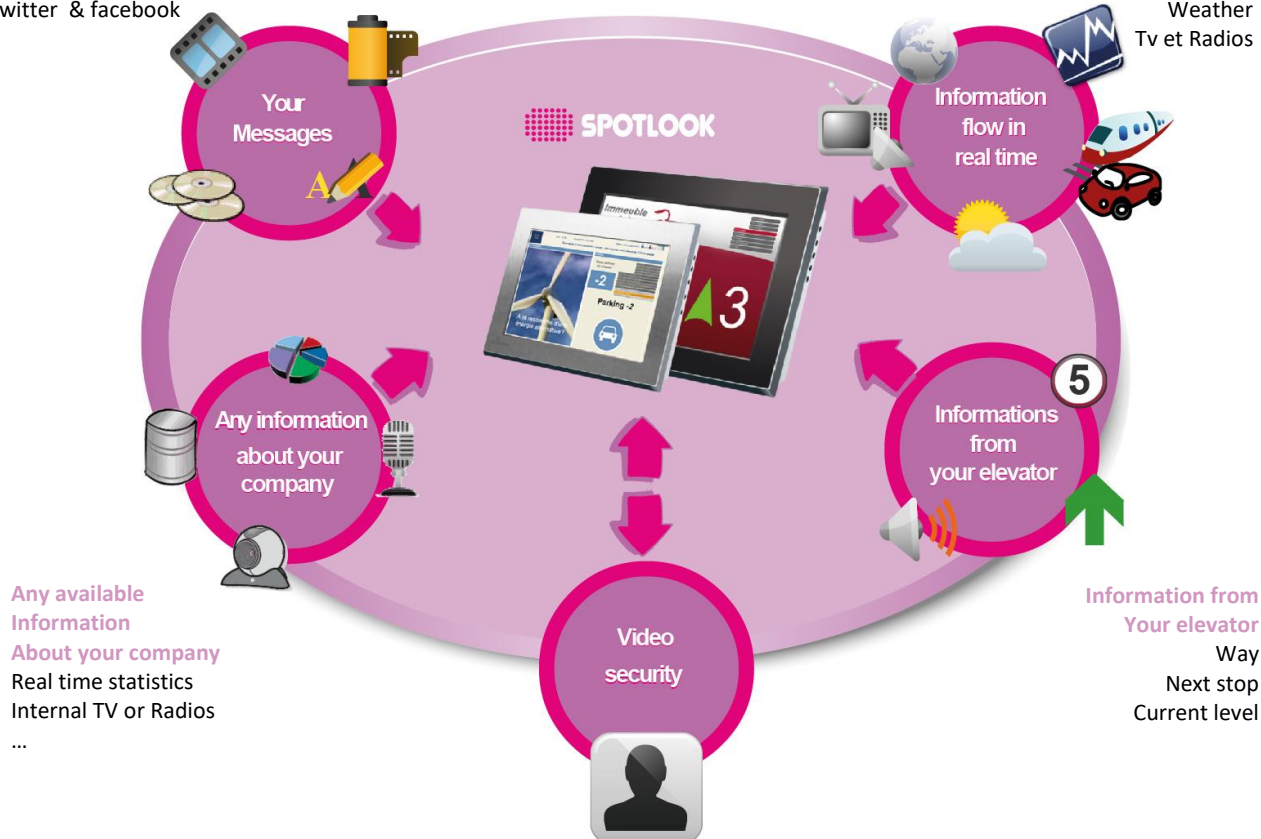
Informations and messages you can display on your displays

Your messages

Texts
Images
DVD
Videos
Twitter & facebook



Information flow in Real time

News
Stock Exchange
Traffic
Weather
Tv et Radios



Using our interface (accessible from any computer connected to internet using a simple web browser) you can customize your display, , and easily show on your screens:

Your communications

- Your Twitter  or  pages, updated in real-time.
- Your texts (our text recognition search engine verifies that the messages displayed contain nothing discriminatory, racist, homophobic, etc.).
- Your images (image formats supported include JPEG, PNG and GIF).
- Your animations, videos or films, available on the Internet, on your Intranet, or locally (animation and film formats supported include SWF, AVI, WMV, ASF, MPEG...).
- Your Internet or Intranet pages.
- Your presentations on Microsoft PowerPoint or Prezi.

You can use a private space, fully manageable from a web browser, to upload your images, movies and animations, and make them accessible through your screens.

Information flow in real time (optional)

With content from our partners, it's easy to broadcast a wide range of information in real time on your video monitors:

- Weather,
- News bulletins (France, International, Business, People, Sports, Environment...),
- Stock indexes, currency exchange,
- Mass transit and traffic reports,
- Live televised streaming,

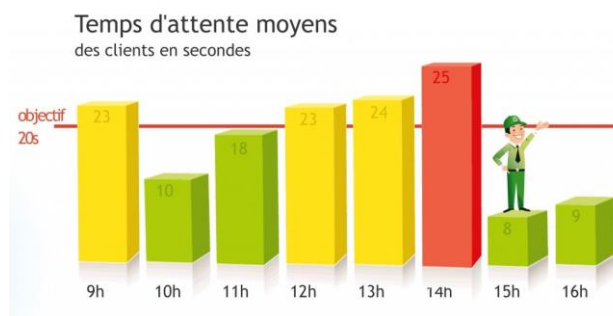


Any available information about your company (optional requires a prior study)

Would you like to automate broadcasting of content that is specific to your company?

- real time statistics for your call center?
- energy consumption for your building?
- webcam, menu and waiting time for your company's dining service?
- internal informational bulletins?
- performance results and figures in real time?

It is indeed possible! Contact us, and after a detailed study of your needs, we'll provide you with a personalized estimate.



Information that can be made available to your visitors as they watch your video monitors,

Would you like to enable your visitors to download your information on their mobile phones (including neighborhood map, shuttle schedules, vital information, bulletins, etc.)? Would you like to give them direct access to your Facebook page, Twitter account, ..?

Your video displays can do it for you:

-a message on your screen will indicate to visitors (in possession of NFC or QRCode compatible phones), that they can download your information.

-your screen lets visitors: access your mobile sites, download your applications and maps...

You can also access detailed statistics about your visitors via Flashcode and NFC thanks to our dedicated SPOTLOOK Statistics portal.



QR-Code statistics portal & NFC SPOTLOOK Statistics

Information from your elevator (optional)

Your SPOTLOOK Equinox display also lets you display standard information of your elevator (current floor, up/down, next stop), information unique to your building (listing departments on each level, the logos of those departments, as well as animated features, videos, and texts for the next stop or for the current floor).

Page layout (dimensions of elevator information within the screen), logos and images can be fully personalized and adjusted from the Internet.

Custom layout examples

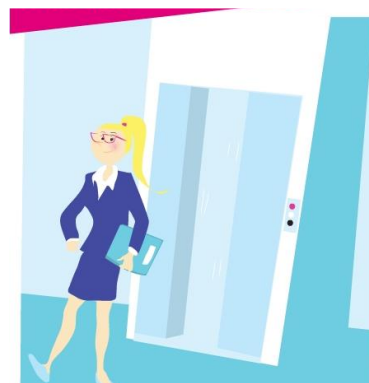
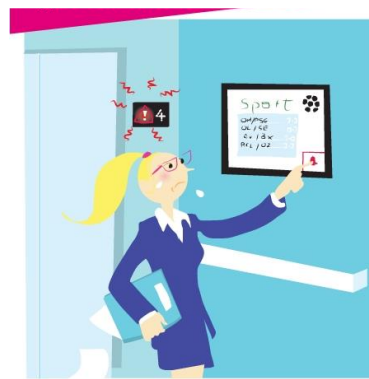


Communication (Video + Audio) with your Security Command Post (optional)

Video screens (video calling option) are equipped with an integrated camera as well as a microphone and speaker.

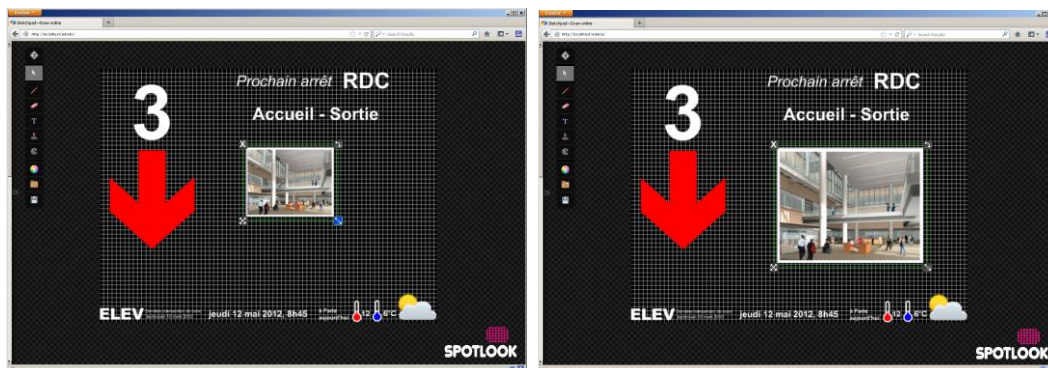
Functions allowed are as follows:

- the video monitor is in its so-called “normal” mode, so it displays the information you configured.
- a person located in the elevator pushes on the emergency call button. A signal is sent out to alert the caller that the call to the establishment is being made. The call is routed to your Security Command Post.
- the security professional answers the call (a text signal indicates from which elevator the call has originated) by pushing on the panel button reserved for this purpose,
- the elevator and the Security Command Post enter into a video conversation.
- once the video call is disconnected (this can only be done by the Security Command Post), the monitor returns to its original mode.



Customize your display

You can customize easily your displays, using a simple web browser, from any computer connected to the internet.

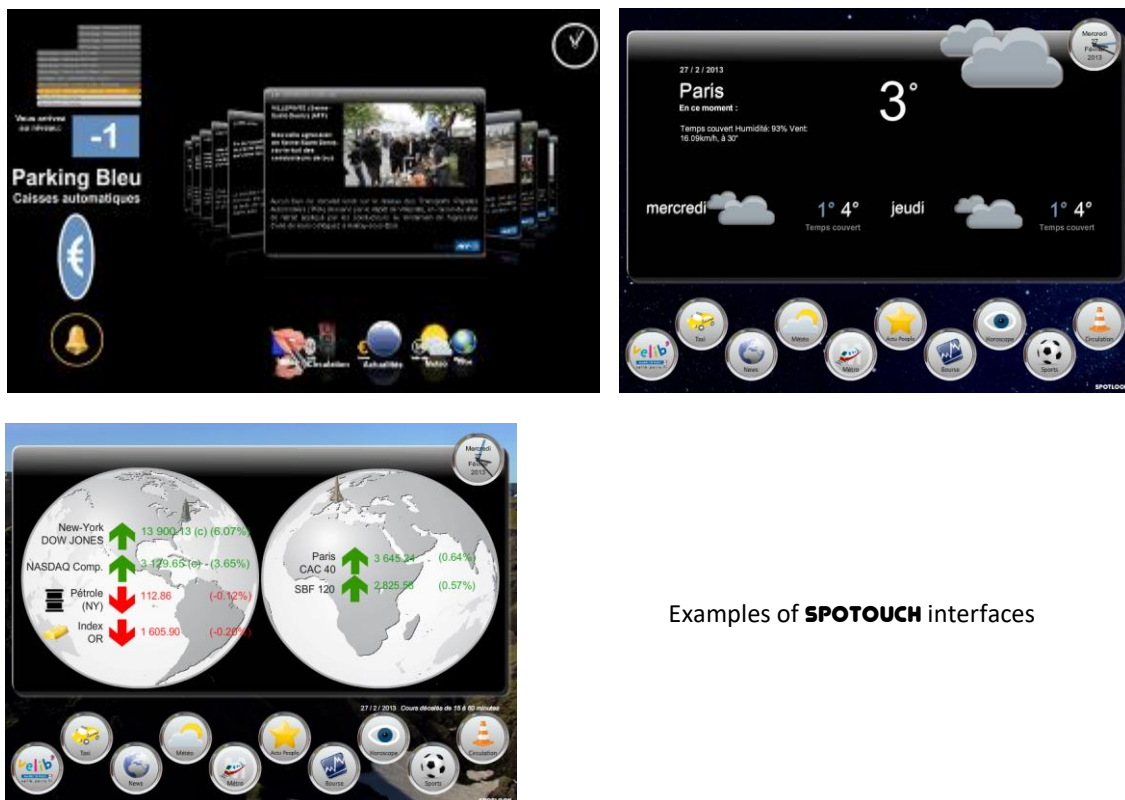


Example of customizing elevator informations layout

SPOTOUCH : a touchscreen in your elevator ? (option)

On the proposed materials, we can implement our **SPOTOUCH** solution. It is a solution of touch screens for elevators, allowing your visitors to see their choice of external information in our bouquet as well as your own information (films, animations ..) .

SPOTOUCH allows you to access all the information of our **Equinox** displays range .

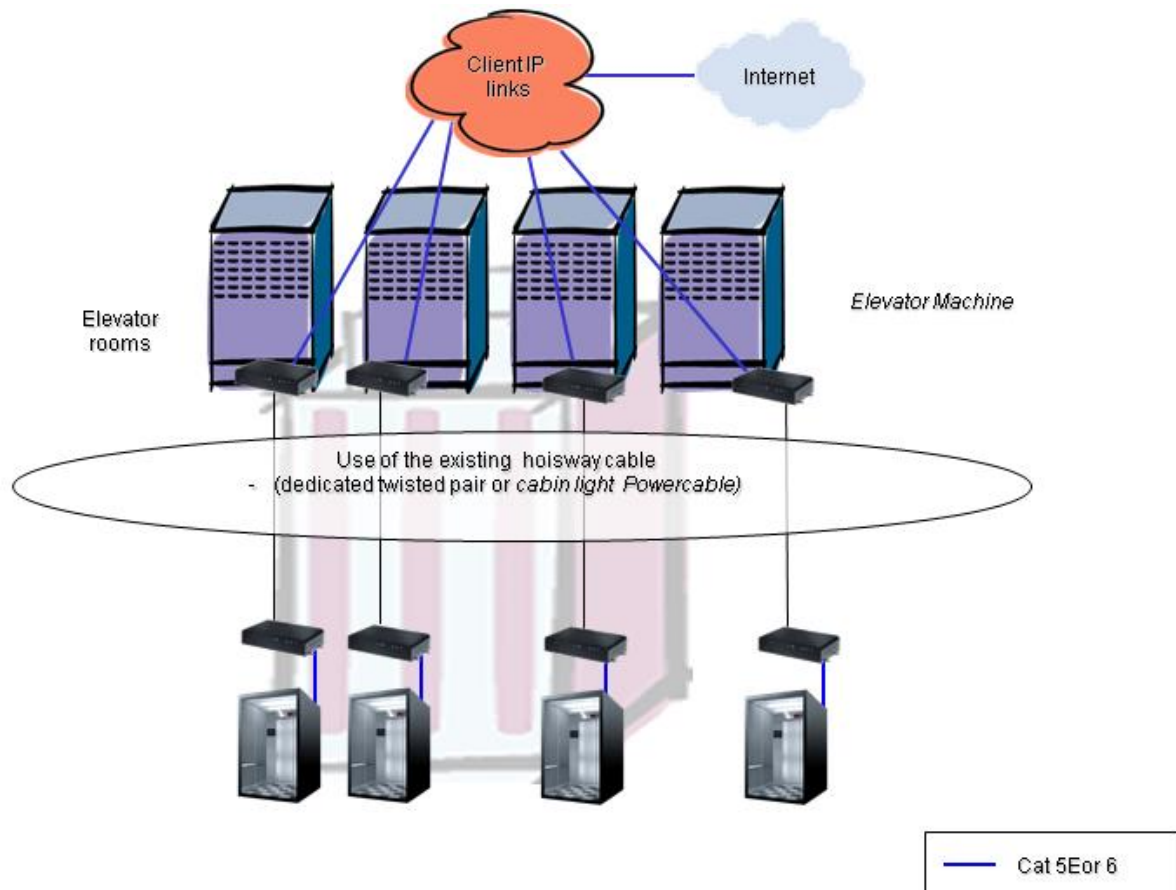


Examples of **SPOTOUCH** interfaces

Architecture & Materials

Global Architecture

Our solution is based on the following architecture:



- A pair of modems per cabin, enabling the displays to be connected to internet using either powerline (cabin light powercable) or a dedicated twisted pair in the existing hoistway cable)

An internet access is needed nearby each of the modems in the elevator room. This is a client prerequisite for the project.

Cabin architecture

- 1 modem + cables (connected to the other modem in the machinery room).
- 1 display (see characteristics below).
- 1 player (central units) to be installed on the cabin roof or integrated directly in the display (see characteristics below).



Cabin architecture SPOTLOOK Equinox

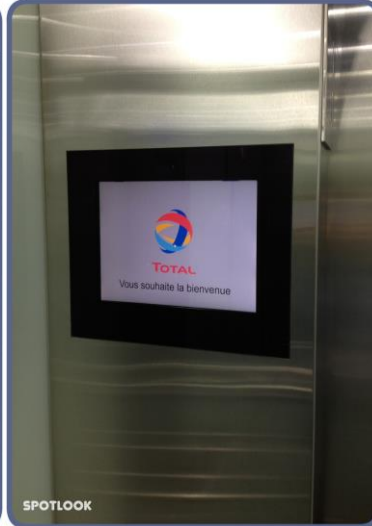
Materials

A wide range of video displays and finishes are available in order to achieve the best possible integration with your needs and the dimensions available in your elevators

By using a mounted case, a video monitor in your elevator won't require major installation

No need to pursue complete remodeling of your elevators to install video displays. Our mounting cases for video screens allow easy installation in any elevator with a semi-flush finishing (1.2 mm overage required to mask the wall cutting).





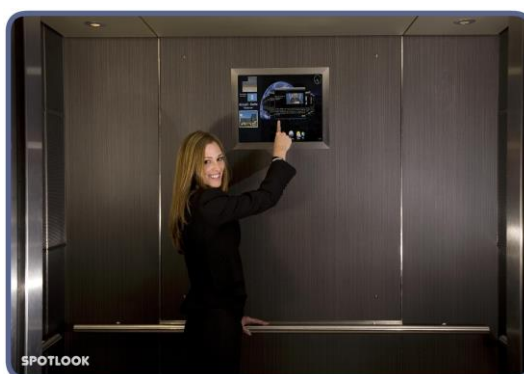
Integration examples



Custom finishing example

Stainless steel finishing

This finish allows you to integrate your screen in any type of wall, and offers a polished or brushed stainless steel rim.



Elevator video screen with a stainless steel finishing

Built-in Ready

The simplest approach is to choose a built-in ready video monitor that mo other settings that do not require a visible finish.





Integration examples

Tailor-made finish

Our video screen solutions for elevators include tailor-made finishing:

- display dimensions ranging from 7 to 32 inches or more, as needed,
- display in your organization's colors and logos: we offer personalized screen protective glass to achieve tailor-made results.



Custom integration examples

End of the document

Need help ?

Please feel free to contact us

contacts@spotlook.com

or by phone +33 (0)1 47 78 92 60



SPOTLOOK
spotlook.com

70, rue Jean Jaurès - 92800 Puteaux - FRANCE